



Madison, Wisconsin

CITY OF MADISON

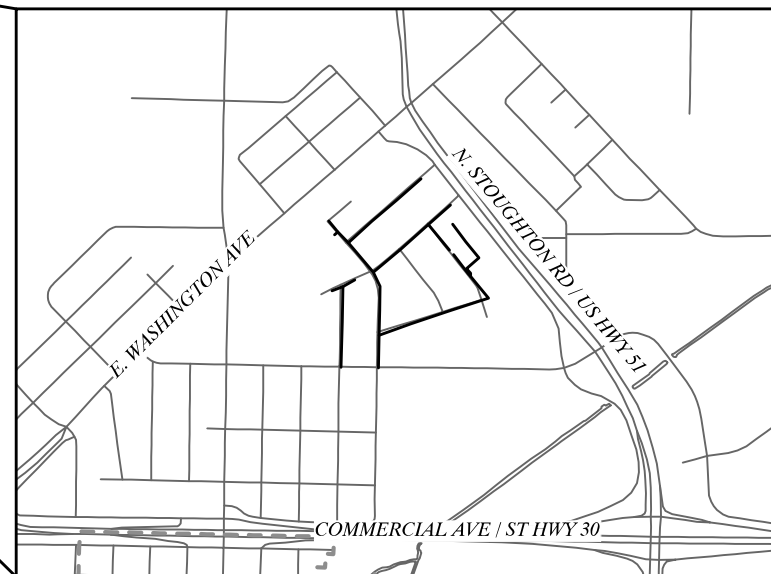
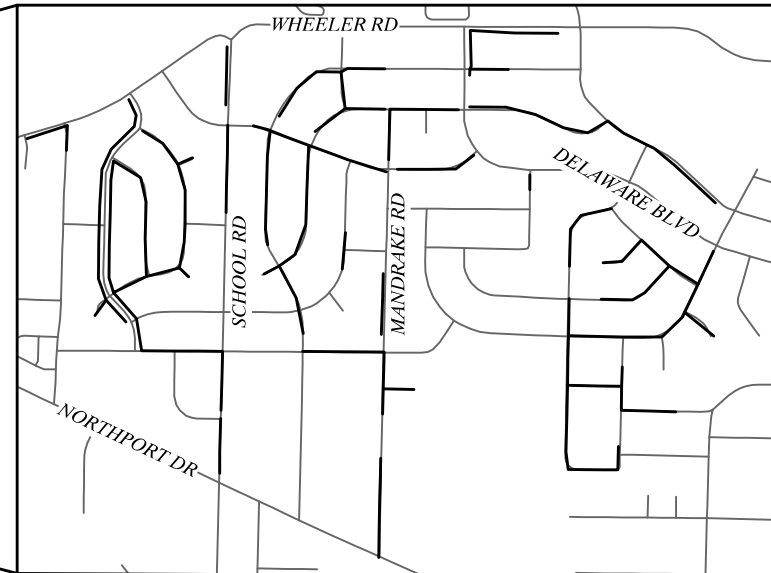
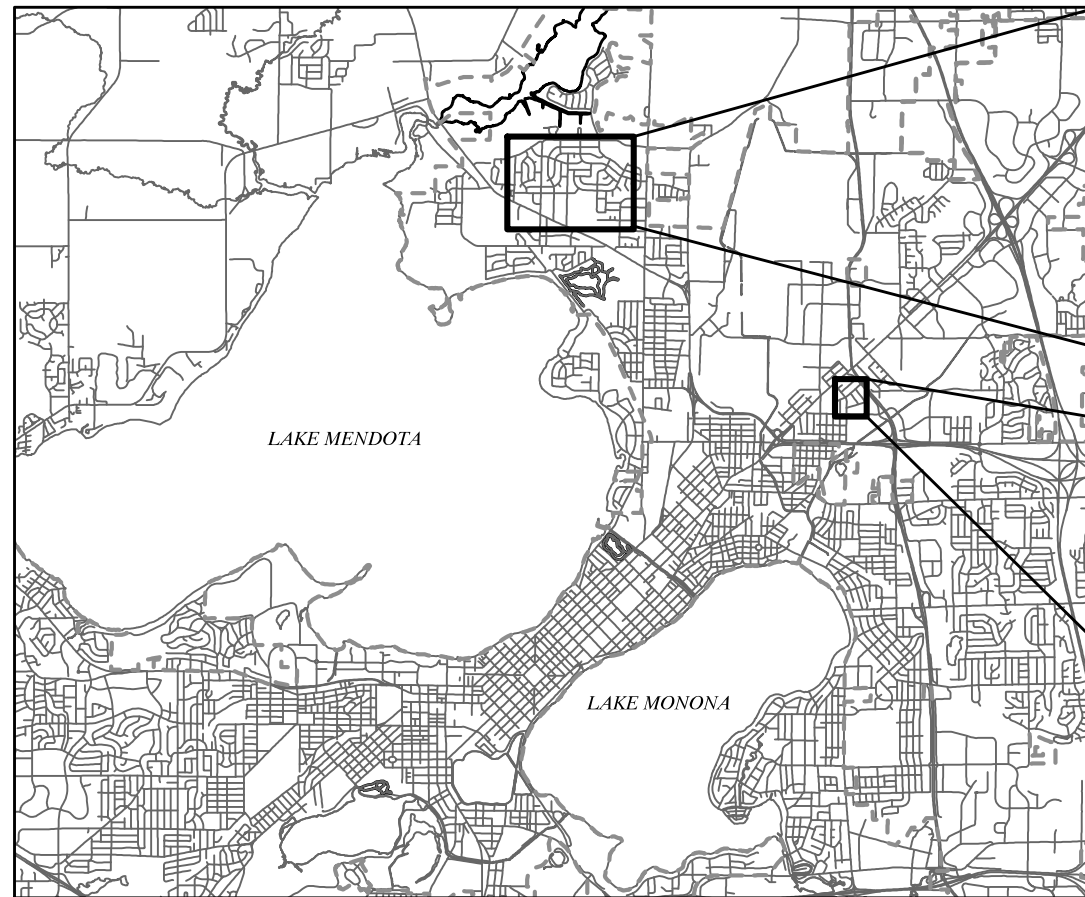
CITY ENGINEERING DIVISION

DEPARTMENT OF PUBLIC WORKS

PLAN OF PROPOSED IMPROVEMENT

CIPP REHAB OF SANITARY SEWERS - 2020

CITY PROJECT NO. 12755
CONTRACT NO. 8870



PUBLIC IMPROVEMENT PROJECT
APPROVED

AUGUST 4, 2020

BY THE COMMON COUNCIL
OF MADISON, WISCONSIN

PUBLIC IMPROVEMENT DESIGN
APPROVED BY:

W. Greg Fries

Sep 10, 2020

City Engineer

Date

SANITARY SEWER
DESIGNED BY:



Sep 10, 2020

PLOT SCALE: 1 IN:1 FT_XREF

PLOT NAME: ---

REV. DATE: 9/3/2020 2:25 PM

ORIGINATOR: CITY_OF_MADISON

SANITARY SEWER

LOCATION	U.S. STRUCT.	D.S. STRUCT.	DIA (IN)	LENGTH (LF)	MATERIAL	LATERALS	SHEET
PRAIRIE AVE	SAS 6333-003	SAS 6333-004	8	266	VP	5	P2
PRAIRIE AVE	SAS 6333-004	SAS 6233-023	8	298	VP	7	P2
PRAIRIE AVE	SAS 6233-023	SAS 6234-009	8	284	VP	7	P2
MAYFAIR AVE	SAS 6234-009	SAS 6234-010	8	334	VP	2	P2
MAYFAIR AVE	SAS 6234-010	SAS 6334-001	8	133	VP	1	P1
MAYFAIR AVE	SAS 6334-001	SAS 6334-002	8	207	VP	7	P1
MAYFAIR AVE	SAS 6334-002	SAS 6334-003	8	213	VP	4	P1
MAYFAIR AVE	SAS 6233-022	SAS 6233-021	8	37	VP	0	P2
MAYFAIR AVE	SAS 6233-018	SAS 6233-021	8	119	VP	0	P2
MAYFAIR AVE	SAS 6233-021	SAS 6234-009	8	125	VP	0	P2
ROSENDALE AVE	SAS 6334-017	SAS 6333-006	8	282	VP	4	P2
ROSENDALE AVE	SAS 6333-007	SAS 6334-010	8	182	VP	1	P2
ROSENDALE AVE	SAS 6334-010	SAS 6334-011	8	179	VP	3	P2
ROSENDALE AVE	SAS 6334-011	SAS 6334-012	8	143	VP	0	P2
ROSENDALE AVE	SAS 6334-012	SAS 6334-013	8	59	VP	0	P1
ROSENDALE AVE	SAS 6334-009	SAS 6334-014	8	213	VP	5	P2
ROSENDALE AVE	SAS 6334-013	SAS 6334-015	8	31	VP	0	P1
ROSENDALE AVE	SAS 6334-014	SAS 6334-015	8	25	VP	0	P1
ROSENDALE AVE	SAS 6334-015	SAS 6334-016	8	242	VP	3	P1
CONCORD AVE	SAS 6234-008	SAS 6234-006	8	119	VP	1	P1
CONCORD AVE	SAS 6234-007	SAS 6234-006	8	101	VP	1	P1
FAIRMONT AVE	SAS 6234-006	SAS 6234-005	8	316	VP	8	P1
FAIRMONT AVE	SAS 6234-005	SAS 6235-011	8	399	VP	12	P1
CONCORD AVE	SAS 6333-005	SAS 6333-006	8	260	VP	6	P2
CONCORD AVE	SAS 6333-006	SAS 6334-004	8	328	VP	9	P2
CONCORD AVE	SAS 6334-004	SAS 6234-010	8	319	VP	8	P2
CHERRY AVE	SAS 6334-005	SAS 6334-006	8	357	VP	9	P1
BRIGHAM AVE	SAS 6334-016	SAS 6334-008	8	346	VP	9	P1
BRIGHAM AVE	SAS 6334-008	SAS 6334-019	8	48	VP	0	P1
BRIGHAM AVE	SAS 6334-019	SAS 6334-007	8	311	VP	9	P1
BRIGHAM AVE	SAS 6334-007	SAS 6334-003	8	297	VP	9	P1
MAYFAIR AVE	SAS 6334-003	SAS 6335-003	8	289	VP	6	P1
WYOMING WAY	SAS 5421-002	SAS 5321-019	8	258	VP	6	P12
WYOMING WAY	SAS 5321-019	SAS 5321-018	8	200	VP	5	P12
WYOMING WAY	SAS 5321-018	SAS5321-021	8	212	VP	3	P12
WYOMING WAY	SAS 5321-021	SAS 5321-022	8	50	VP	0	P12
WYOMING WAY	SAS 5321-022	SAS 5320-003	8	217	VP	3	P12
WYOMING WAY	SAS 5320-003	SAS 5320-004	8	164	VP	2	P12
MONICA LN	SAS 5320-004	SAS 5320-005	8	191	VP	2	P12
MONICA LN	SAS 5320-005	SAS 5320-006	8	197	VP	5	P12
MONICA LN	SAS 5320-006	SAS 5220-011	8	248	VP	7	P10
MONICA LN	SAS 5220-011	SAS 5220-012	8	255	VP	4	P10
MONICA LN	SAS 5220-012	SAS 5220-008	8	296	VP	5	P10
DEBRA LN	SAS 5220-013	SAS 5220-005	8	316	VP	10	P10
DEBRA LN	SAS 5220-007	SAS 5220-005	10	46	CI	0	P10
DEBRA LN	SAS 5220-005	SAS 5220-006	10	23	CI	0	P10
DELAWARE BLVD	SAS 5220-006	SAS 5220-002	10	294	CI	1	P10
WHEELER RD	SAS 5320-010	SAS 5220-016	8	357	VP	4	P10
WHEELER RD	SAS 5220-016	SAS 5220-002	8	361	VP	3	P10
DORTON CIR	SAS 5021-015	SAS 5021-014	8	126	VP	2	P5
ELGAR LN	SAS 5021-009	SAS 5021-014	8	213	VP	5	P5
ELGAR LN	SAS 5021-014	SAS 5021-013	8	206	VP	5	P5
ELGAR LN	SAS 5021-013	SAS 5020-009	8	187	VP	5	P5
BONNER LN	SAS 5022-015	SAS 5022-013	8	237	VP	2	P4
BONNER CIR	SAS 5022-014	SAS 5022-013	8	155	VP	3	P4
BONNER CIR	SAS 5022-013	SAS 5022-012	8	178	VP	1	P4
BONNER LN	SAS 5022-012	SAS 5022-011	8	298	VP	4	P4
BONNER LN	SAS 5022-011	SAS 5021-001	8	294	VP	4	P4
BONNER LN	SAS 5021-001	SAS 5021-010	8	300	VP	4	P5

MARK	REVISION	DATE	BY
12755			
Designed By: KDF	Date: 9/10/2020 7:52 AM	Scale: #####	D-1

12755
MADISON, WI
8870
CONTRACT NO:

DETAILED LINING LIMITS
CIPP REHAB OF SANITARY SEWERS - 2020
F:\Encocmon\Trenchless2020\MH2\MH1\Drawings\12755 Plans.dwg



12755
D-1

SANITARY SEWER

LOCATION	U.S. STRUCT.	D.S. STRUCT.	DIA (IN)	LENGTH (LF)	MATERIAL	LATERALS	SHEET
BONNER LN	SAS 5021-010	SAS 5021-011	8	174	VP	2	P5
BONNER LN	SAS 5021-011	SAS 5020-002	8	263	VP	3	P5
BONNER LN	SAS 5020-002	SAS 5020-003	8	95	VP	1	P5
BONNER LN	SAS 5020-003	SAS 5020-004	8	137	VP	0	P5
SCHOOL RD	SAS 5123-007	SAS 5123-008	8	253	VP	3	P3
SCHOOL RD	SAS 5123-008	SAS 5122-021	8	221	VP	4	P3
HAVEY RD	SAS 5122-021	SAS 5022-007	8	187	VP	1	P3
HAVEY RD	SAS 5022-007	SAS 5022-006	8	190	VP	3	P3
HAVEY RD	SAS 5022-006	SAS 5022-005	8	277	VP	5	P3
BONNER LN	SAS 5022-005	SAS 5022-004	8	262	VP	0	P3
BONNER LN	SAS 5022-004	SAS 5022-016	8	285	VP	1	P4
BONNER LN	SAS 5022-016	SAS 5022-017	8	120	VP	1	P4
BONNER LN	SAS 5022-017	SAS 5022-018	8	259	VP	3	P4
BONNER LN	SAS 5022-018	SAS 5021-002	8	268	VP	3	P4
BONNER LN	SAS 5021-002	SAS 5021-003	8	266	VP	3	P5
BONNER LN	SAS 5021-003	SAS 5021-012	8	157	VP	1	P5
SCHOOL RD	SAS 5121-014	SAS 5121-013	8	200	VP	4	P8
SCHOOL RD	SAS 5121-013	SAS 5121-012	8	258	VP	7	P8
SCHOOL RD	SAS 5121-012	SAS 5120-018	8	246	VP	4	P9
WHEELER RD	SAS 4921-013	SAS 4920-001	8	346	VP	2	P5
KENNEDY RD	SAS 4921-015	SAS 4920-001	8	203	VP	3	P5
SCHOOL RD	SAS 5123-006	SAS 5123-005	8	267	VP	5	P3
SCHOOL RD	SAS 5123-005	SAS 5124-019	8	174	VP	2	P3
CODY LN	SAS 5022-019	SAS 5021-006	8	305	VP	6	P4
CODY LN	SAS 5021-006	SAS 5021-005	8	297	VP	8	P4
CODY LN	SAS 5021-005	SAS 5021-004	8	202	VP	6	P5
CODY LN	SAS 5021-004	SAS 5021-012	8	249	VP	4	P5
ELGAR CIR	SAS 5022-020	SAS 5022-021	8	106	VP	2	P4
ELGAR LN	SAS 5022-021	SAS 5022-019	8	276	VP	5	P4
ELGAR LN	SAS 5022-019	SAS 5022-016	8	297	VP	7	P4
ELGAR LN	SAS 5022-021	SAS 5021-007	8	214	VP	4	P4
ELGAR LN	SAS 5021-007	SAS 5021-008	8	147	VP	3	P4
ELGAR LN	SAS 5021-008	SAS 5021-009	8	276	VP	6	P4
BARBY LN	SAS 5122-004	SAS 5122-005	8	299	VP	5	P7
BARBY LN	SAS 5122-005	SAS 5122-006	8	295	VP	5	P7
JUDY CIR	SAS 5122-007	SAS 5122-006	8	142	VP	2	P8
JUDY LN	SAS 5122-006	SAS 5122-011	8	160	VP	1	P8
JUDY LN	SAS 5122-011	SAS 5121-017	8	253	VP	6	P8
JUDY LN	SAS 5121-017	SAS 5121-009	8	318	VP	9	P8
JUDY LN	SAS 5121-009	SAS 5121-001	8	322	VP	5	P8
NORTHLAND DR	SAS 5121-001	SAS 5121-002	8	199	VP	5	P9
NORTHLAND DR	SAS 5121-002	SAS 5120-014	8	131	VP	1	P9
NORTHLAND DR	SAS 5120-014	SAS 5120-015	8	16	VP	0	P9
NORTHLAND DR	SAS 5120-015	SAS 5120-019	8	124	VP	1	P9
SCHOOL RD	SAS 5020-016	SAS 5020-015	8	225	VP	3	P9
SCHOOL RD	SAS 5020-014	SAS 5020-015	8	247	VP	3	P9
MANDRAKE RD	SAS 5124-003	SAS 5124-002	8	154	VP	4	P6
MANDRAKE RD	SAS 5124-002	SAS 5124-001	8	155	VP	3	P6
MANDRAKE RD	SAS 5124-001	SAS 5124-014	8	266	VP	4	P6
MANDRAKE RD	SAS 5124-014	SAS 5124-015	8	196	VP	1	P6
MANDRAKE RD	SAS 5223-004	SAS 5223-003	8	249	VP	6	P7
MANDRAKE RD	SAS 5223-002	SAS 5223-003	8	199	VP	4	P6
MANDRAKE RD	SAS 5223-003	SAS 5222-017	8	300	VP	2	P7
HAVEY RD	SAS 5222-017	SAS 5122-019	8	366	VP	8	P7
HAVEY RD	SAS 5122-019	SAS 5122-020	8	298	VP	4	P7
MANDRAKE RD	SAS 5122-016	SAS 5122-017	8	287	VP	6	P7
MANDRAKE RD	SAS 5122-017	SAS 5122-018	8	209	VP	5	P7
JAY DR	SAS 5122-012	SAS 5121-018	8	295	VP	7	P8
BARBY LN	SAS 5122-010	SAS 5121-016	8	131	VP	2	P8

MARK	REVISION	DATE	BY
12755			
Designed By: KDF	Date: 9/10/2020 7:52 AM	Scale: #####	D-2

12755
MADISON, WI
8870
CONTRACT NO:

12755
CIPP REHAB OF SANITARY SEWERS - 2020
 F:\Encommon\Trenchless\2020 MH2\MH1\Drawings\12755 Plans.dwg



12755
D-2

SANITARY SEWER

LOCATION	U.S. STRUCT.	D.S. STRUCT.	DIA (IN)	LENGTH (LF)	MATERIAL	LATERALS	SHEET
BARBY LN	SAS 5121-016	SAS 5121-011	8	299	VP	9	P8
BARBY LN	SAS 5121-011	SAS 5121-010	8	300	VP	8	P8
BARBY LN	SAS 5121-010	SAS 5120-014	8	204	VP	2	P9
NORTHLAND DR	SAS 5121-004	SAS 5121-006	8	329	VP	6	P8
NORTHLAND DR	SAS 5121-006	SAS 5121-008	8	130	VP	4	P9
NORTHLAND DR	SAS 5121-008	SAS 5121-001	8	204	VP	4	P9
MANDRAKE RD	SAS 5121-003	SAS 5120-017	8	208	VP	3	P9
MANDRAKE RD	SAS 5120-017	SAS 5120-016	8	193	VP	4	P9
MONICA LN	SAS 5120-016	SAS 5220-010	8	291	VP	4	P10
MONICA LN	SAS 5220-010	SAS 5220-009	8	260	VP	4	P10
MONICA LN	SAS 5120-010	SAS 5120-011	8	314	VP	8	P9
MONICA LN	SAS 5120-012	SAS 5120-011	8	323	VP	5	P9
ILENE LN	SAS 5120-011	SAS 5120-007	8	298	VP	6	P9
DEBRA LN	SAS 5120-007	SAS 5120-006	8	59	VP	0	P9
DEBRA LN	SAS 5120-005	SAS 5120-006	8	303	VP	5	P9
DEBRA LN	SAS 5120-013	SAS 5120-009	8	267	VP	3	P9
DEBRA LN	SAS 5120-009	SAS 5120-008	8	193	VP	3	P9
DEBRA LN	SAS 5120-008	SAS 5120-007	8	203	VP	1	P9
TENNESSEE TRL	SAS 5221-012	SAS 5221-013	8	123	VP	0	P11
NORTHLAND DR	SAS 5221-006	SAS 5221-005	8	261	VP	8	P10
NORTHLAND DR	SAS 5221-005	SAS 5221-004	8	212	VP	6	P10
NORTHLAND DR	SAS 5221-004	SAS 5221-003	8	186	VP	4	P10
NEVADA RD	SAS 5322-016	SAS 5322-015	8	253	VP	6	P13
NEVADA RD	SAS 5322-015	SAS 5322-014	8	112	VP	2	P13
NEVADA RD	SAS 5322-014	SAS 5322-013	8	296	VP	5	P13
ARIZONA CIR	SAS 5322-012	SAS 5322-011	8	155	VP	5	P13
ARIZONA CIR	SAS 5322-011	SAS 5321-012	8	232	VP	4	P13
ARIZONA PASS	SAS 5322-013	SAS 5321-012	8	307	VP	7	P13
ARIZONA PASS	SAS 5322-013	SAS 5322-017	8	274	VP	5	P13
ESCH LN	SAS 5322-010	SAS 5321-001	8	298	VP	7	P13
ESCH LN	SAS 5321-001	SAS 5321-002	8	143	VP	3	P13
ESCH LN	SAS 5321-002	SAS 5321-003	8	250	VP	6	P12
ESCH LN	SAS 5322-006	SAS 5322-008	8	301	VP	3	P14
ESCH LN	SAS 5323-005	SAS 5323-004	8	224	VP	3	P14
ESCH LN	SAS 5323-004	SAS 5322-006	8	173	VP	2	P14
IOWA DR	SAS 5322-006	SAS 5322-005	8	203	VP	3	P14
IOWA DR	SAS 5322-005	SAS 5322-004	8	240	VP	6	P14
IOWA DR	SAS 5322-004	SAS 5322-003	8	313	VP	8	P14
DAKOTA DR	SAS 5322-003	SAS 5322-002	8	230	VP	5	P14
DAKOTA DR	SAS 5322-002	SAS 5322-001	8	41	VP	1	P14
DAKOTA DR	SAS 5322-001	SAS 5322-017	8	253	VP	3	P13
DAKOTA DR	SAS 5322-017	SAS 5422-002	8	294	VP	8	P13
VERMONT CIR	SAS 5422-001	SAS 5322-001	8	308	VP	6	P14
MAYFIELD LN	SAS 5323-005	SAS 5323-006	8	238	VP	3	P14
MAYFIELD LN	SAS 5323-006	SAS 5323-007	8	208	VP	3	P14
KENWOODS ST	SAS 5323-007	SAS 5323-008	8	154	VP	1	P14
MAYFIELD LN	SAS 5323-002	SAS 5323-010	8	146	VP	1	P14
MAYFIELD LN	SAS 5323-010	SAS 5323-011	8	291	VP	5	P14
KENWOODS ST	SAS 5323-011	SAS 5323-007	8	195	VP	3	P14
ESCH LN	SAS 5323-015	SAS 5324-012	8	144	VP	1	P15
ESCH LN	SAS 5324-012	SAS 5324-013	8	300	VP	6	P15
ESCH LN	SAS 5324-013	SAS 5324-014	8	108	VP	1	P15
KENWOODS ST	SAS 5323-012	SAS 5324-014	8	187	VP	2	P15
ESCH LN	SAS 5323-015	SAS 5323-014	8	300	VP	5	P15
ESCH LN	SAS 5323-014	SAS 5323-005	8	238	VP	7	P14

MARK	REVISION	DATE	BY
12755			
Designed By: KDF	Date: 9/10/2020 7:53 AM	Scale: #####	D-3

12755
MADISON, WI
8870
CONTRACT NO:

DETAILED LINING LIMITS
CIPP REHAB OF SANITARY SEWERS - 2020
F:\Encommon\Trenchless\2020 MH2\MH1\Drawings\12755 Plans.dwg



12755
D-3

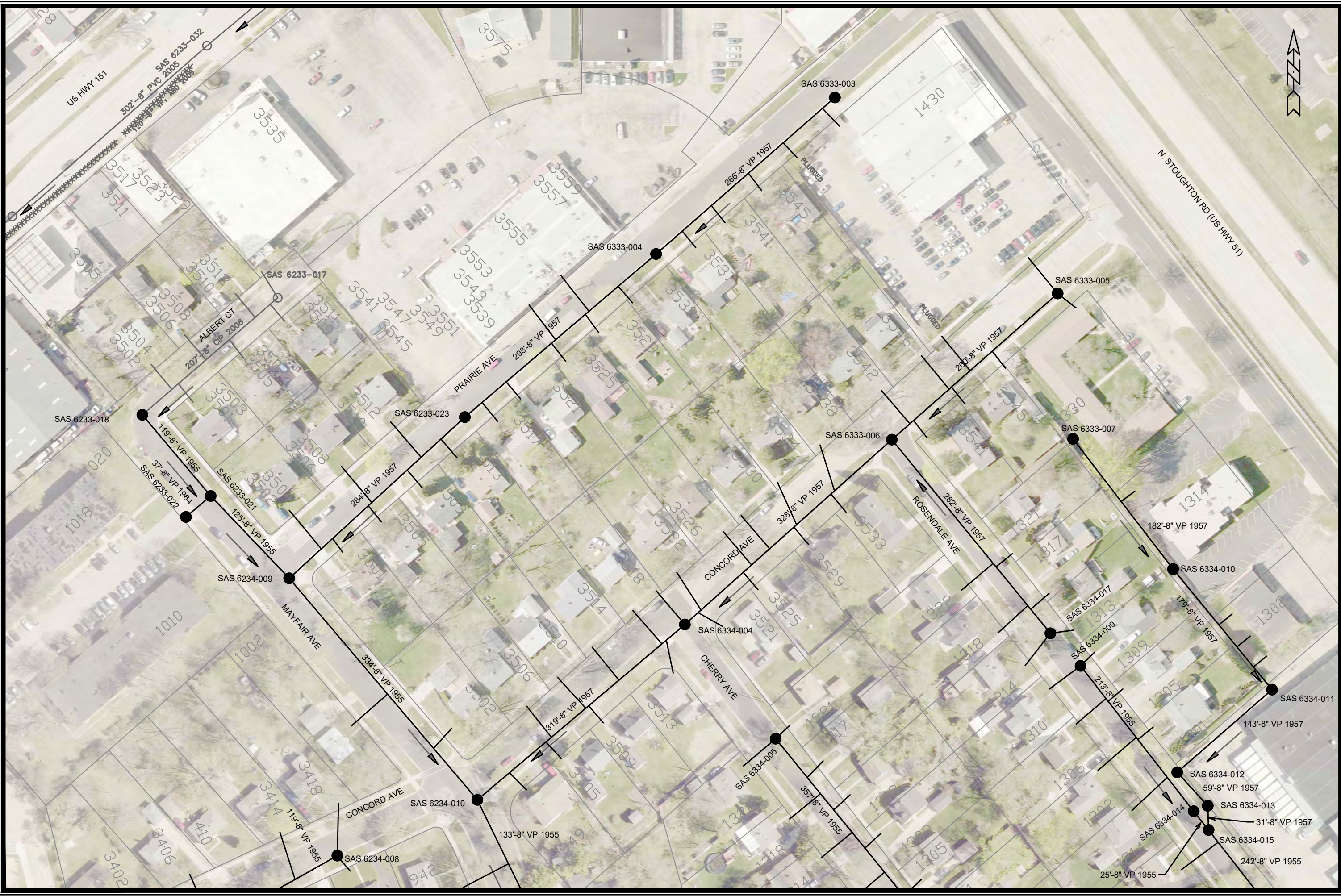


MARK	REVISION	DATE	BY
12755	12755	9/10/2020 7:53 AM	###/###/###

12755
 MADISON, WI
 CONTRACT NO: 8870

UTILITY PLAN
 CIPP REHAB OF SANITARY SEWERS - 2020
 F:\Encommon\Trenchless\2020 MH2\Drawings\12755 Plans.dwg


 12755
 P-1



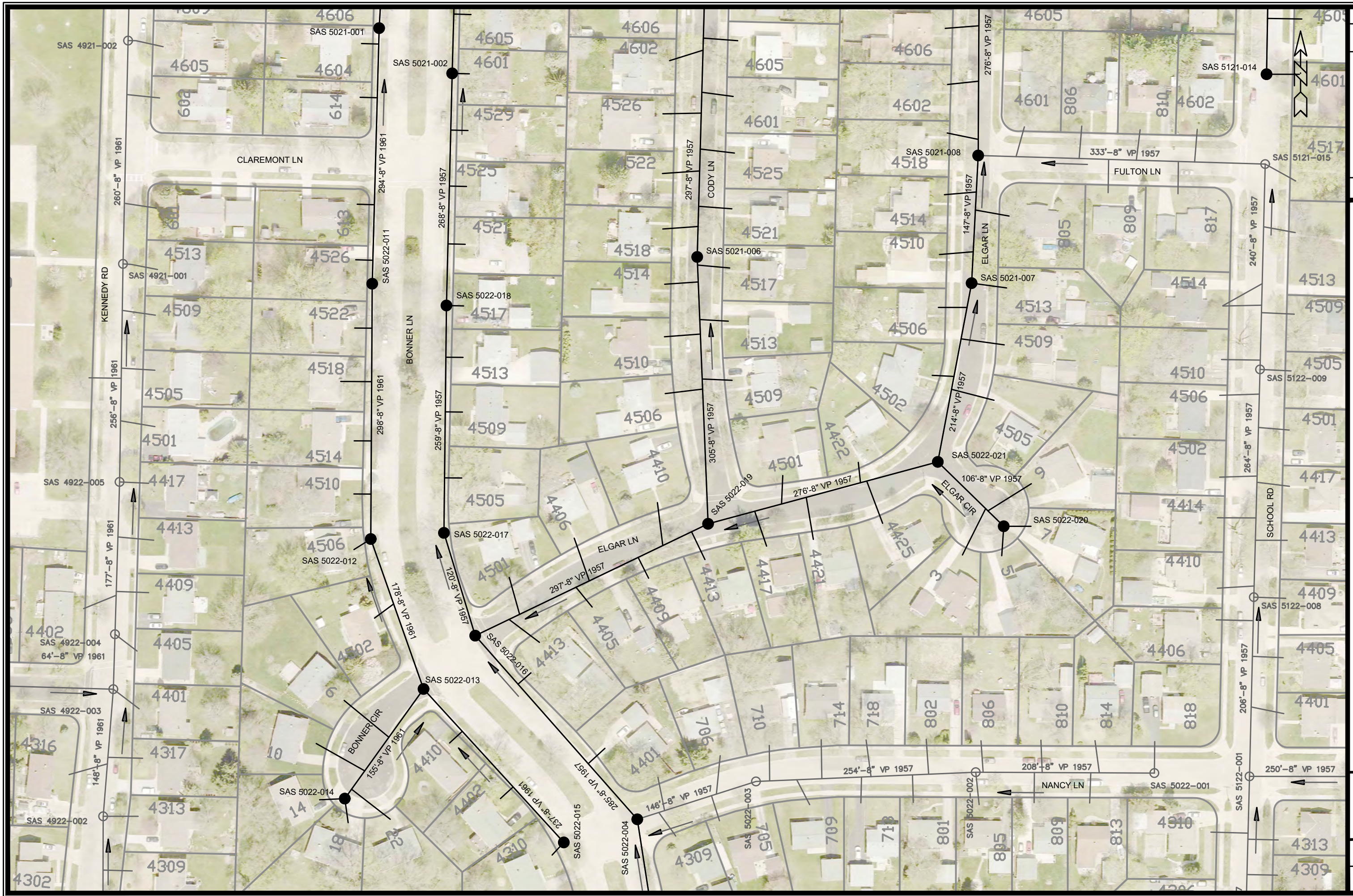
DATE	BY
REVISION	
Designed By: KDF	Date: 9/10/2020 7:53 AM
Scale: #####	
12755	P-2

12755
 MADISON, WI
 CONTRACT NO: 8870

UTILITY PLAN
 CIPP REHAB OF SANITARY SEWERS - 2020
 F:\Encommon\Trenchless\2020 MH2\MH1\Drawings\12755 Plans.dwg



12755
 P-2



MARK	REVISION	DATE	BY
12755	12755	9/10/2020 7:54 AM	12755

12755
MADISON, WI
CONTRACT NO: 8870

UTILITY PLAN
CIPP REHAB OF SANITARY SEWERS - 2020
F:\Encommon\Trenchless\2020 MH2\MH1\Drawings\12755 Plans.dwg



12755
P-4



CHEROKEE MARSH - SOUTH

MARK	REVISION	DATE	BY

Scale: #####
 Date: 9/10/2020 7:55 AM
 Designed By: KDF
 12755

12755
 MADISON, WI
 CONTRACT NO: 8870

UTILITY PLAN
 CIPP REHAB OF SANITARY SEWERS - 2020
 F:\Encommon\Trenchless\2020 MH2\MH\Drawings\12755 Plans.dwg



12755
 P-5



MARK	REVISION	DATE	BY
12755	12755	9/10/2020 7:55 AM	12755

12755
 MADISON, WI
 CONTRACT NO: 8870

UTILITY PLAN
 CIPP REHAB OF SANITARY SEWERS - 2020 - 12755 Plans.dwg
 F:\common\Trenchless\2020 MH2\MH\Drawings\12755 Plans.dwg

12755
 P-6





MARK	REVISION	DATE	BY
12755	Designed By: KDF	Date: 9/10/2020 7:56 AM	Scale: #####

12755
 MADISON, WI
 CONTRACT NO: 8870

UTILITY PLAN
 CIPP REHAB OF SANITARY SEWERS - 2020
 F:\Encommon\Trenchless\2020 MH2\MHDrawings\12755 Plans.dwg



12755
 P-9



MARK	REVISION	DATE	BY
12755	12755	9/10/2020 7:56 AM	12755

12755
 MADISON, WI
 CONTRACT NO: 8870

UTILITY PLAN
 CIPP REHAB OF SANITARY SEWERS - 2020
 F:\Encommon\Trenchless\2020 MH2\MHDrawings\12755 Plans.dwg



12755
 P-10



MARK	REVISION	DATE	BY
12755	12755	9/10/2020 7:57 AM	12755

UTILITY PLAN
 12755
 MADISON, WI
 CONTRACT NO: 8870

CIPP REHAB OF SANITARY SEWERS - 2020
 F:\Encommon\Trenchless2020\MH2\MHDrawings\12755 Plans.dwg



12755
 P-11



MARK	REVISION	DATE	BY
12755	9/10/2020	7:57 AM	Scale: #####
Designed By: KDF			Scale: #####
12755			P-12

12755
 MADISON, WI
 CONTRACT NO: 8870

UTILITY PLAN
 CIPP REHAB OF SANITARY SEWERS - 2020
 F:\Encommon\Trenchless\2020 MH2\MH\Drawings\12755 Plans.dwg



12755
 P-12



MARK	REVISION	DATE	BY

12755
 MADISON, WI
 CONTRACT NO: 8870

UTILITY PLAN
 CIPP REHAB OF SANITARY SEWERS - 2020
 F:\Encommon\Trenchless\2020\MH2\MH\Drawings\12755 Plans.dwg





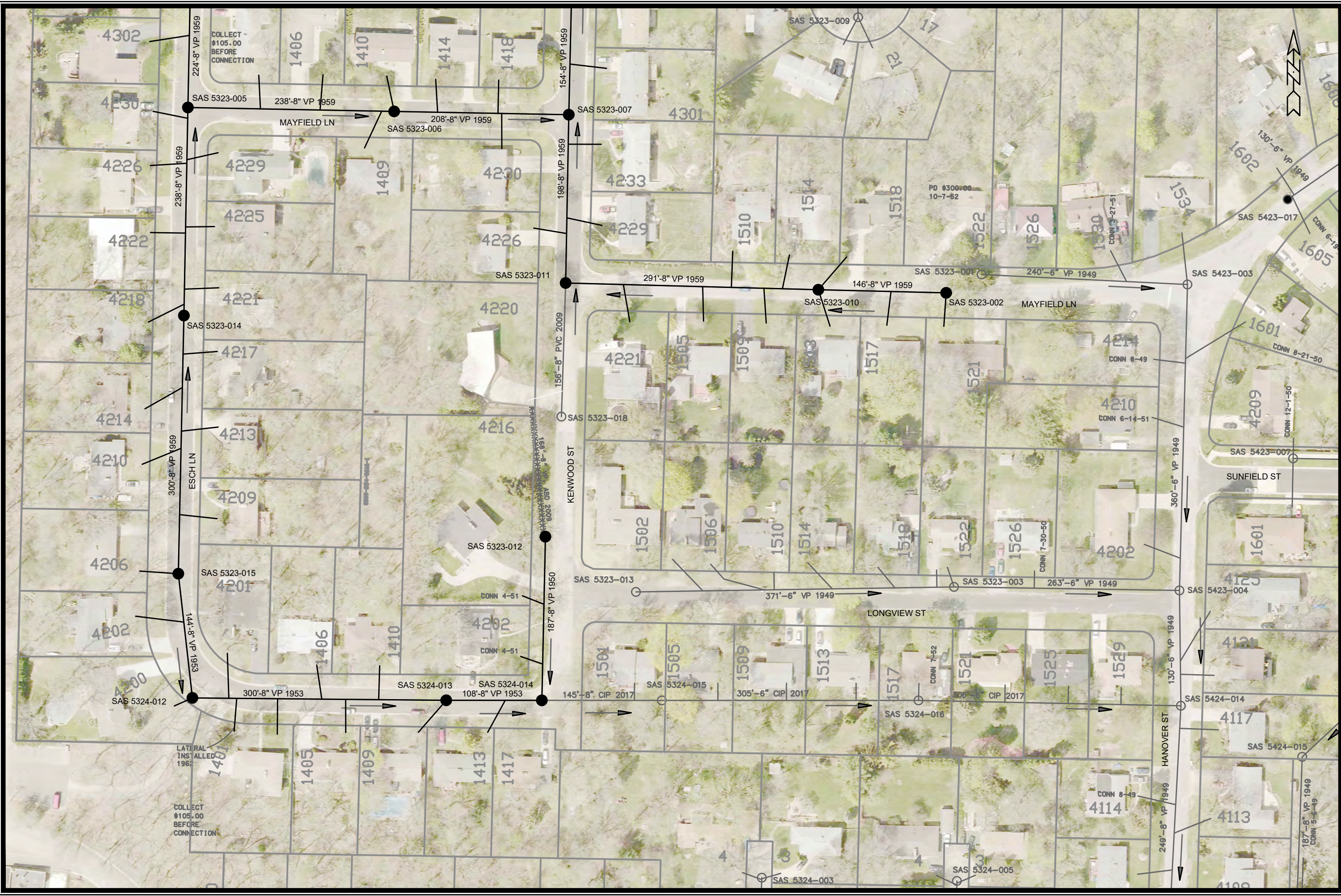
MARK	REVISION	DATE	BY

12755
 MADISON, WI
 CONTRACT NO: 8870

UTILITY PLAN
 CIPP REHAB OF SANITARY SEWERS - 2020
 F:\Encommon\Trenchless2020\MH2\MHDrawings\12755 Plans.dwg



12755
 P-14



REVISION	DATE	BY

12755
 MADISON, WI
 CONTRACT NO: 8870

UTILITY PLAN
 CIPP REHAB OF SANITARY SEWERS - 2020
 F:\Encommon\Trenchless\2020 MH2\Drawings\12755 Plans.dwg


 12755
 P-15